

Position description

Position title	<i>Senior Technical Adviser (Electrical)- Asset Integration</i>
Group / Branch	<i>Service Delivery/Asset Performance and Resilience</i>
Reports to (Title)	<i>Reports to Asset Integration Manager</i>
Competency level	<i>Individual Contributor</i>

Job Purpose

We help create a better world for our customers with forward-thinking water solutions, for all and always, that won't cost the earth. Our purpose of Healthy Water for Life means bringing our customers the clean water they want and safely managing the wastewater they don't. It also means thinking ahead and doing what we need to accomplish now so the generations to come can benefit in the future.

Asset Integration is a multi-faceted team which was created to collaborate with cross divisional stakeholders to provide technical and operational advice during the concept, design, construction, and commissioning and handover phases of new assets.

The Senior Technical Advisor (Electrical) will be responsible for overseeing the commissioning and handover of end-to-end process for electrical plant and equipment. The advice will be required to be provided during the detailed design and commissioning phases to assist the project team with the integration of critical assets into existing networks. Provision of post-commissioning feedback on operational performance will also be essential to allow for enhancement and improvement opportunities.

In addition, even though the role's primary focus and responsibility is the electrical element, civil and mechanical aspects will also feature significantly.

Key Accountabilities

- Establish and foster collaborative and trusting relationships with Maintenance, Operations (Network and Treatment), Asset Creation, Standards teams and industry partners with focus on delivering high quality assets.
- Provide expert technical advice during the planning, design, construction, commissioning, and integration phases of asset creation projects for electrical and instrumentation components.

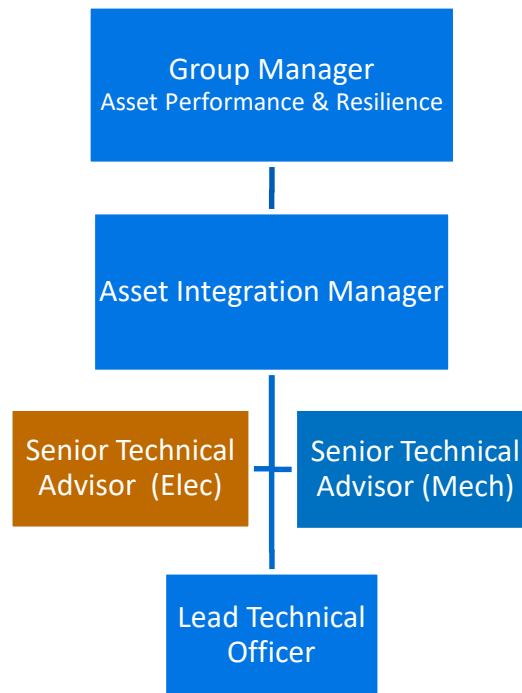
- Engage with and coordinate technical input from key stakeholders throughout the entire asset creation project lifecycle process (planning to commissioning). Key Stakeholders will include Network & Treatment Operations, M&E Asset Services and Operations Technology.
- Provide O&M content and input to the project team to assist with the preparation of the commissioning plans and O&M Manuals.
- Facilitate asset commissioning process and ensure it meets the functional design requirements and the commissioning plan, especially in relation to the electrical and instrumentation components.
- Ensure that project team addresses the rectification of defects and issues as per agreed timelines in order to facilitate a smooth handover to Operations team.
- Ensure the new or upgraded asset complies with appropriate regulations and AS/NZS standards, industry MRWA standards, including documentation and sign off on agreed deviations, record and location of commissioning and integration checklists.
- Provide network and operational content to enable project team to prepare Operational Reference Manuals subject to your acceptance and approval.
- Ensure all data and documentation are registered and appropriately stored in nominated depositories (Asset Register, SCADA, GIS, Drawing Management system).
- Assist in obtaining sign-off of the acceptance of new asset from the relevant teams.
- Assist in training and education in operation and maintenance of new or upgraded assets.
- Ensure lessons learned and recommendations are captured in relevant workflows and systems through participating in post implementation and operational reviews to share learnings from projects.
- Keep abreast of the current M&E maintenance landscape across South East Water's water supply and sewerage networks by developing and maintaining enduring relationships with maintenance and operational staff.
- Liaison with other authorities and industry partners (e.g., WSAA) regarding best practices associated with asset management/integration practices.
- Assist team members in reviewing suitability of designs of other authority works and complex build over applications to ensure that all new asset designs are being appropriately reviewed and existing assets adequately protected.
- Ensure safe work practices required by OH&S legislation and regulations, and South East Water policies and procedures by embedding a culture of safety awareness.
- Participate and promote a highly engaged working environment that is innovative, rewarding, collaborative and inclusive.
- This role may have the opportunity in the future to rotate through other technical positions throughout Service Delivery and South East Water.

Knowledge, Skills & Experience

- Electrical engineering discipline (highly desirable) or 7-10 year post apprenticeship trade experience as an Industrial or commissioning engineer or electrician.
- Excellent interpersonal skills to aid building and maintaining collaborative and professional relationships with key stakeholders including maintenance and operational teams, delivery managers and engineers, customers, consultants and contractors.
- Extensive experience and demonstrated competency in commissioning / handover of plant, water, recycled and sewer assets and equipment.
- Extensive experience and demonstrated competency in operating and maintaining water, recycled water and sewerage networks.
- Extensive knowledge and demonstrated competency in QA Principles, AS/NZS Standards, Codes (WSAA), industry (MRWA) guidelines and applied practices.
- Extensive knowledge of current electrical standards and willingness to drive and/or influence creation of new or updating existing electrical and instrumentation standards.
- Relevant experience and technical understanding of the water industry asset life cycle i.e., planning, design, construction, operations and maintenance.
- Intermediate knowledge of mechanical and civil principals and strong electrical design knowledge is essential.
- Ability to interpret electrical schematic drawings.
- Knowledge of SCADA systems and PLC is an advantage.
- Great attention to detail for reviewing other authority design and construction plans.
- Highly developed strategic and analytical skills for reviewing work processes and procedures and be able to identify and implement improvements.
- Ability to discuss and relay complex technical issues to other parties.
- Excellent time management and prioritisation skills by being able to manage large volume of competing tasks.

Dimensions

Organisational Chart



Number of people managed:

There are no direct reports

Size of budget managed:

N/A

Value of Assets managed:

N/A